

# FRONT WHEEL for *DHC-6 TWIN OTTER*



Retail price  
\$5,990 USD

## HIGH TECHNOLOGY

- > Protected against **corrosion**
- > Optimized to **last longer**
- > **Waterproof environment** of the tapered roller bearings

**Reduce your  
maintenance costs !**

*FAA*

*Transport Canada*

*EASA*

*Approved*

*Zimex Aviation switched to BERINGER Nose Wheel  
for the launch of his DHC6-400*



**The BERINGER kit  
includes:**

- > **1 front wheel**  
(aluminium CNC machined)
- > **Nut & spacers**

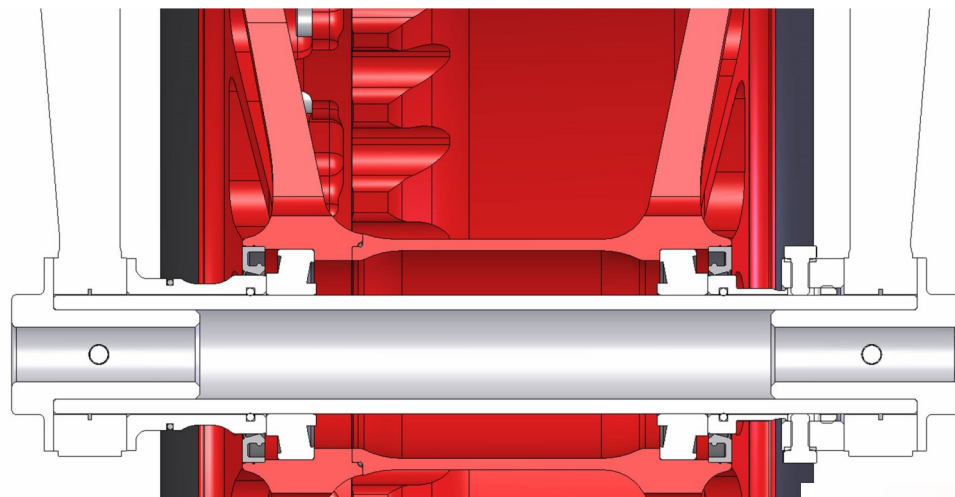
Advanced technology since 1985



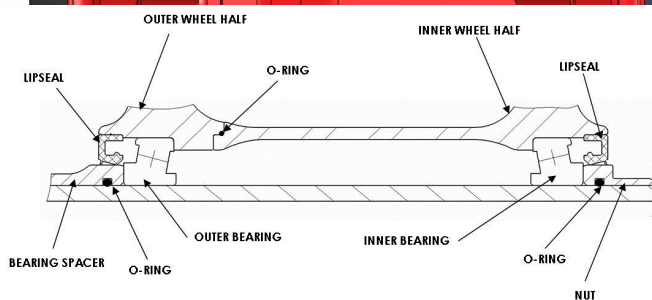
**BERINGER is  
certified EASA-  
Part 21G**



**The wheels are CNC machined from high strength aluminum alloy**



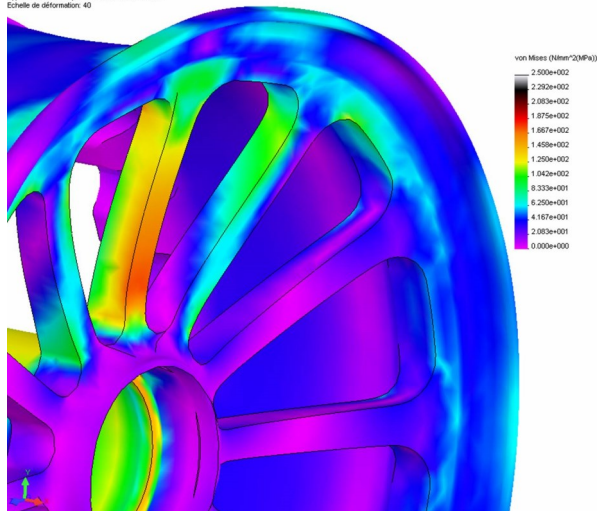
**OPTIMIZED TO  
LAST LONGER**



**Waterproof environment**  
 thanks to lipseals and O-rings:

- ➔ The roller bearings work in **better conditions and last longer**
- ➔ The bearing greasing is spaced out

Nom du modèle: jerte int 6.90-12.5 C  
 Nom de l'éditeur: 1  
 Type de tracé: Chaînes Contraintes nodales-Tracé1  
 Echelle de coloration: 40



**Anodized aluminum parts :**

- ➔ Excellent resistance to **corrosion**

The parts are optimized using highly advanced 3D FEM software and our long knowledge :

- ➔ **Best performance / weight ratio**
- ➔ **Proof tested on our benches**

